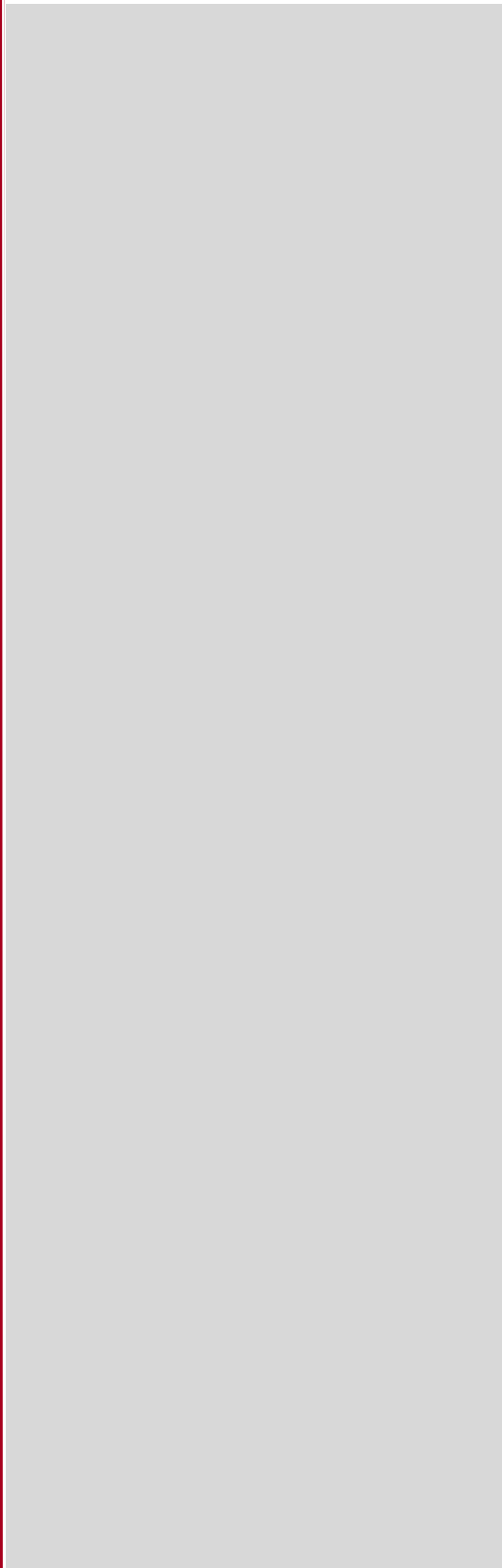




中银证券





:	.....	<b>7</b>
	.....	7
	.....	8
	.....	9
	.....	11
	.....	13
	.....	<b>14</b>
	.....	14
	.....	16
	.....	<b>18</b>
	.....	19
	.....	22
	.....	24
	.....	<b>28</b>
	.....	28
	.....	30
	.....	32
	.....	<b>35</b>
	.....	35
	.....	36
	.....	38
	.....	<b>40</b>
	.....	40
CBD	.....	42
	.....	45
CCUS	.....	46



.....	<b>49</b>
.....	49
.....	49
.....	<b>51</b>





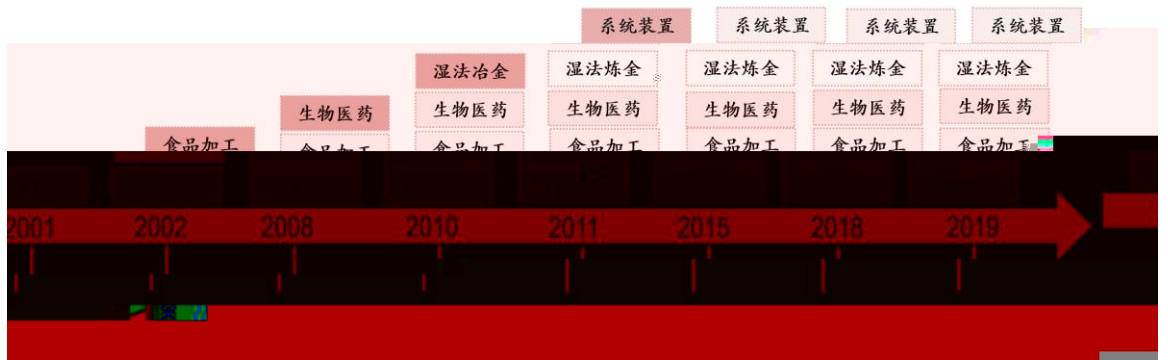
4201 41

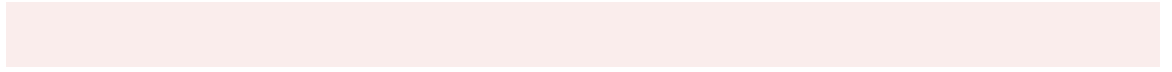
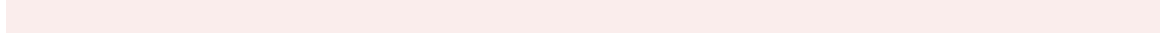
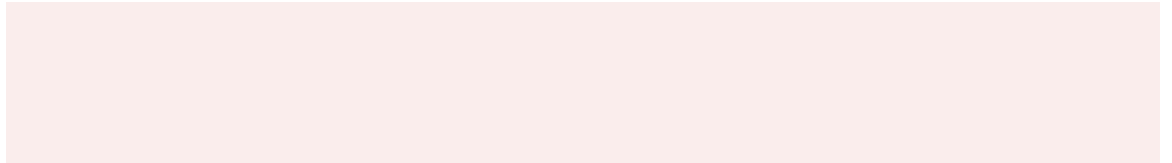
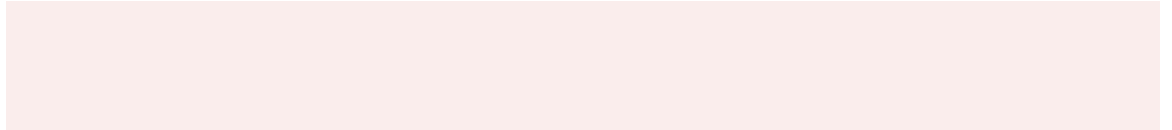
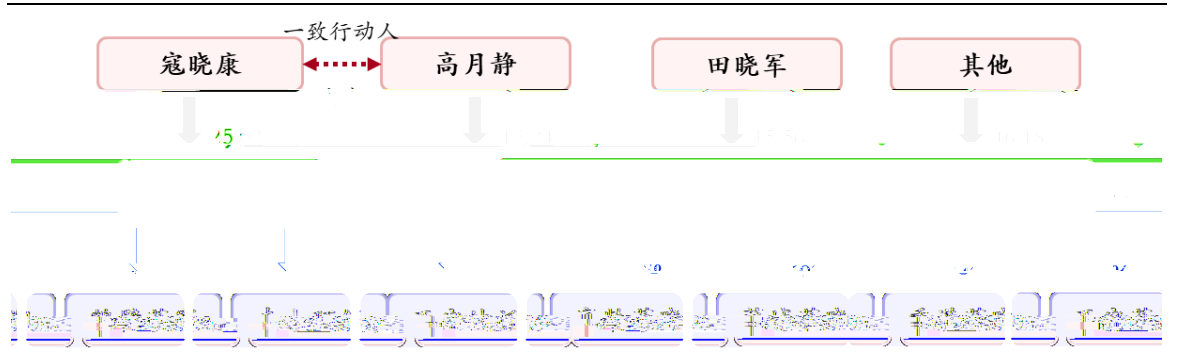
—





：



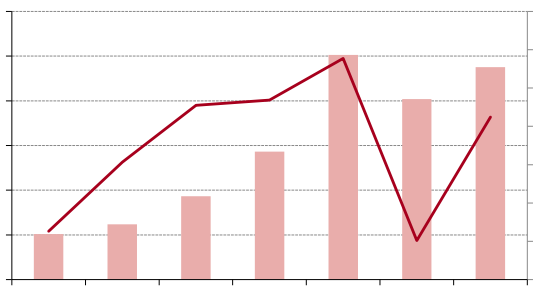
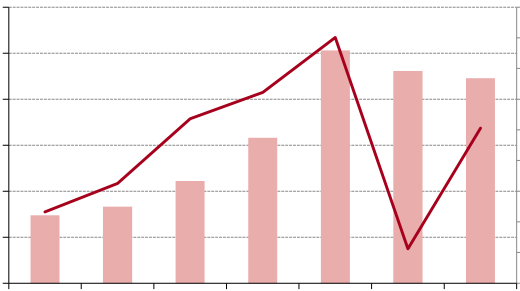




[Redacted text block]

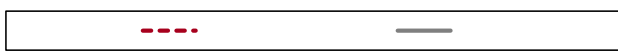
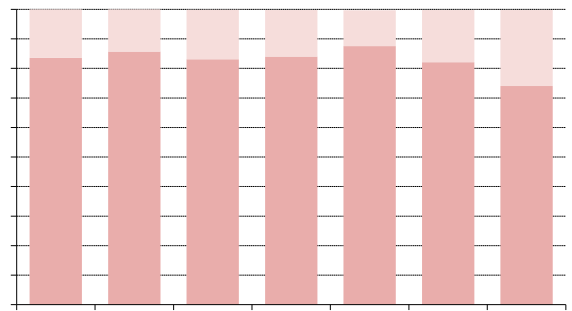
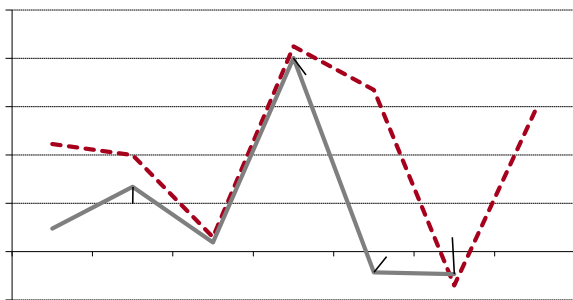
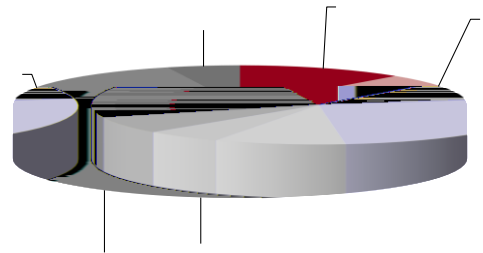
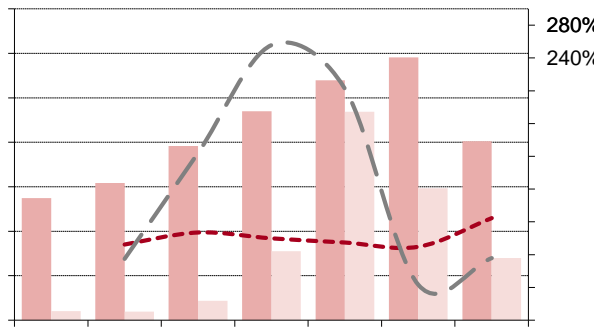
[Redacted text block]

[Redacted text block]

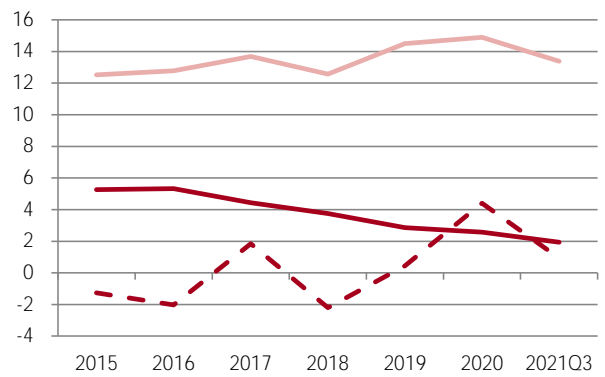
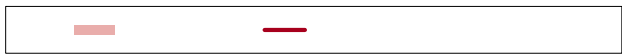
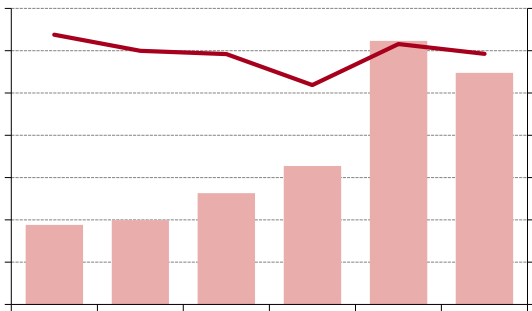
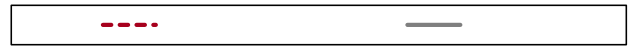
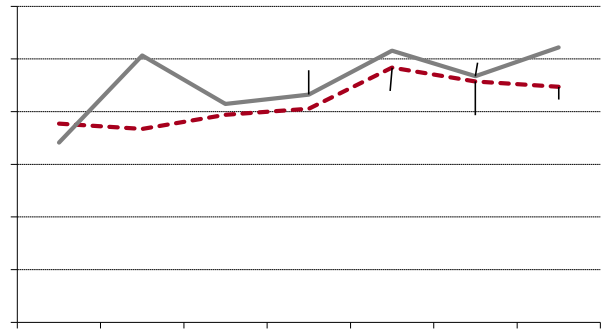
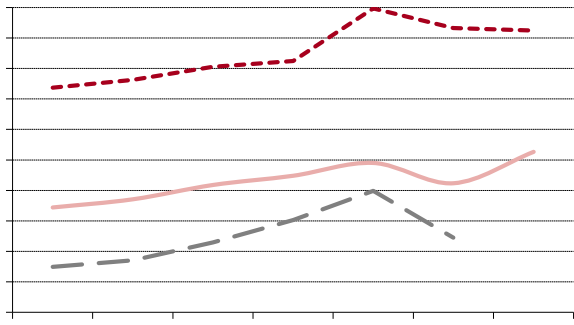


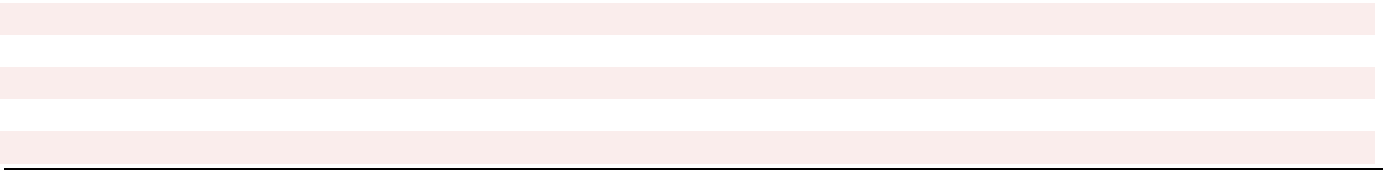
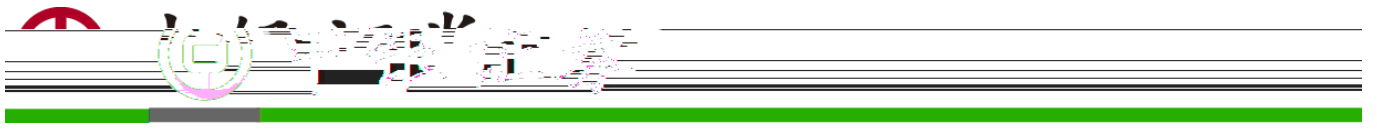
[Redacted caption text]

[Redacted caption text]

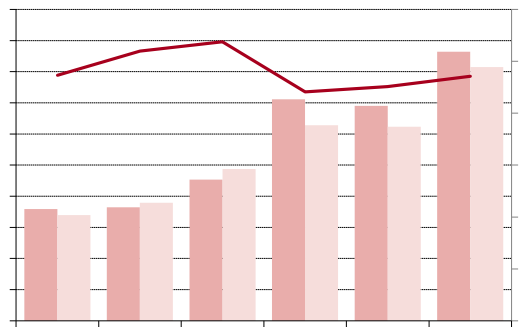
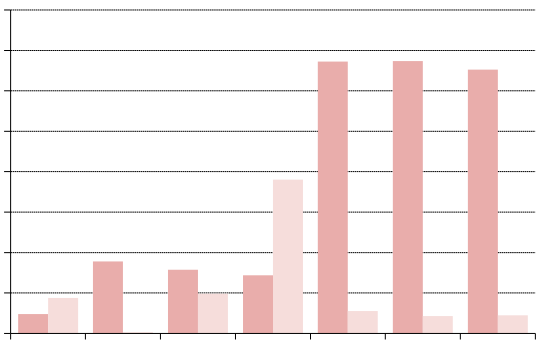
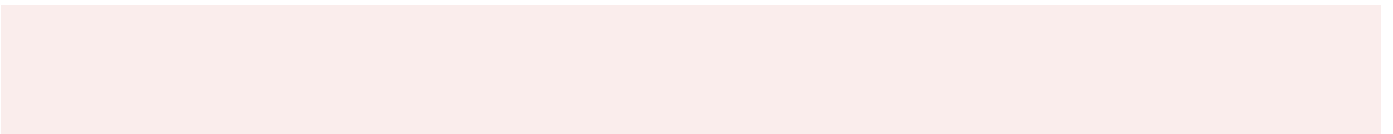


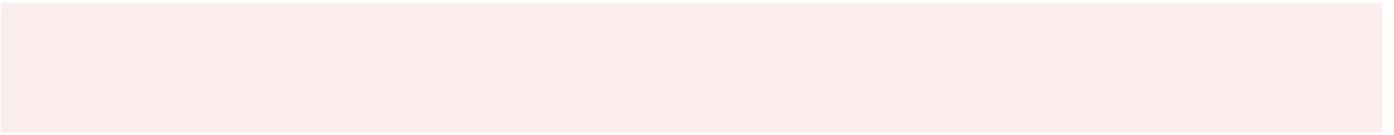
/-/-

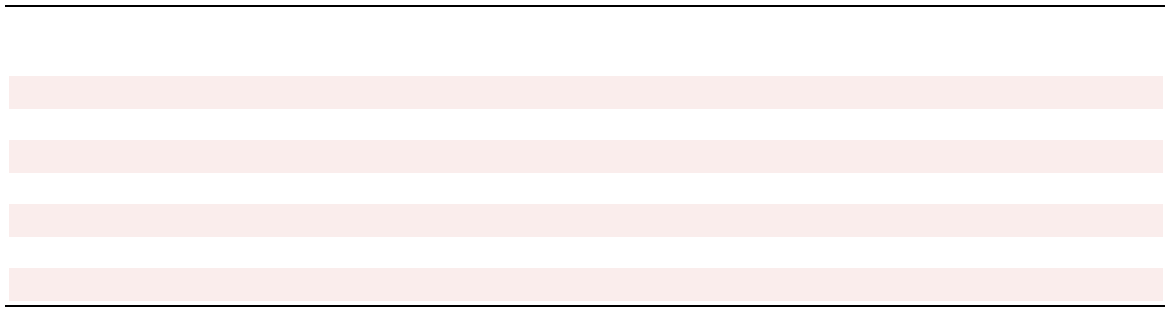




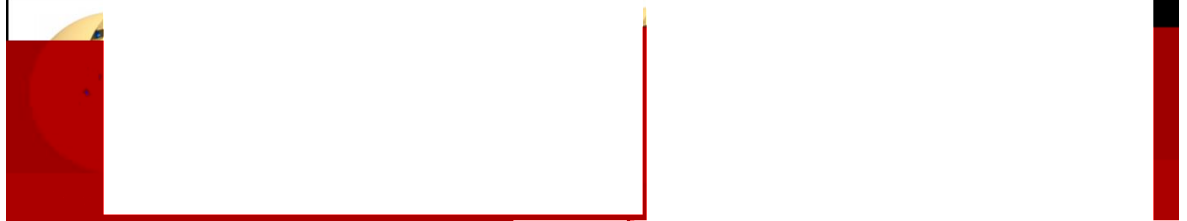
42- - /-.6 42- - , /-/-





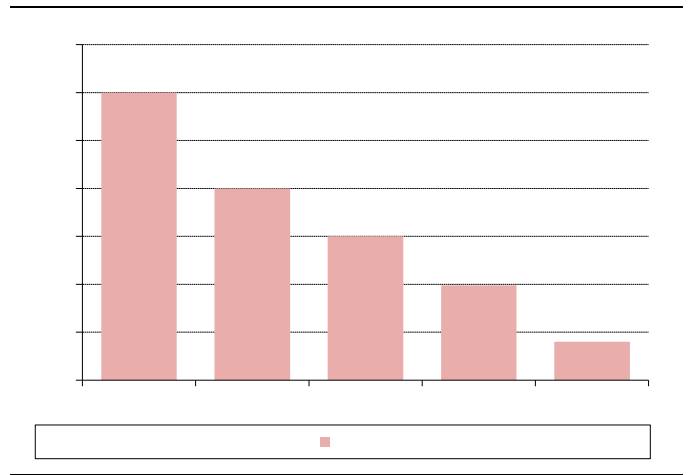
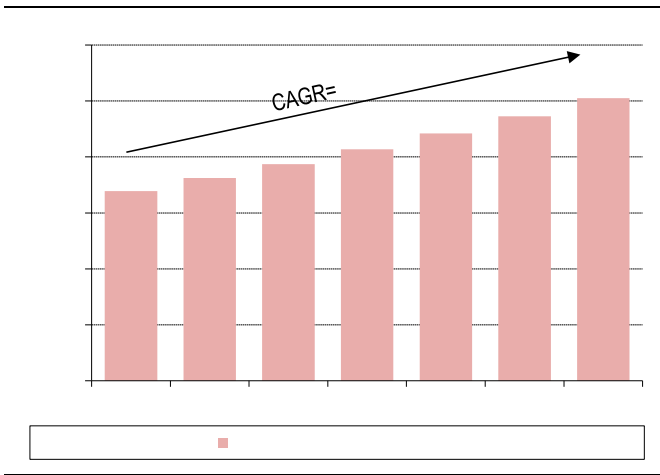
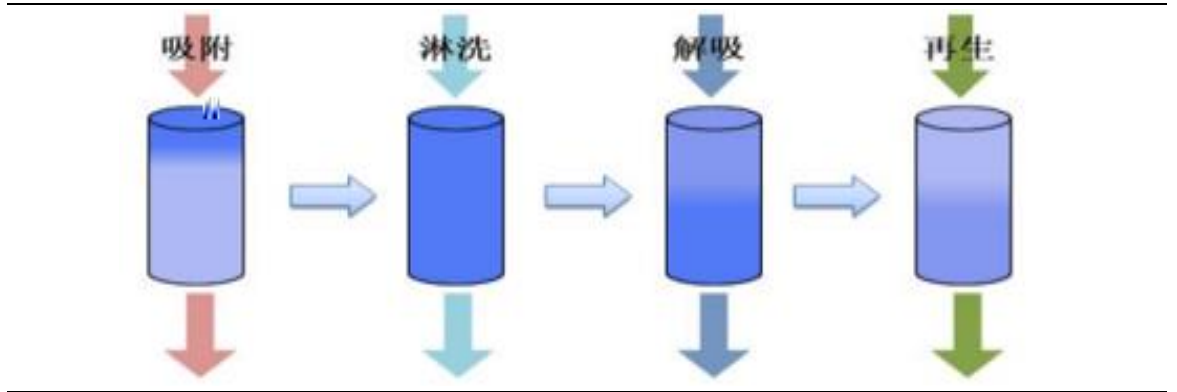


离子交换树脂：应用领域例如硬水软化 吸附树脂：应用领域例如污水处理、生物医药等



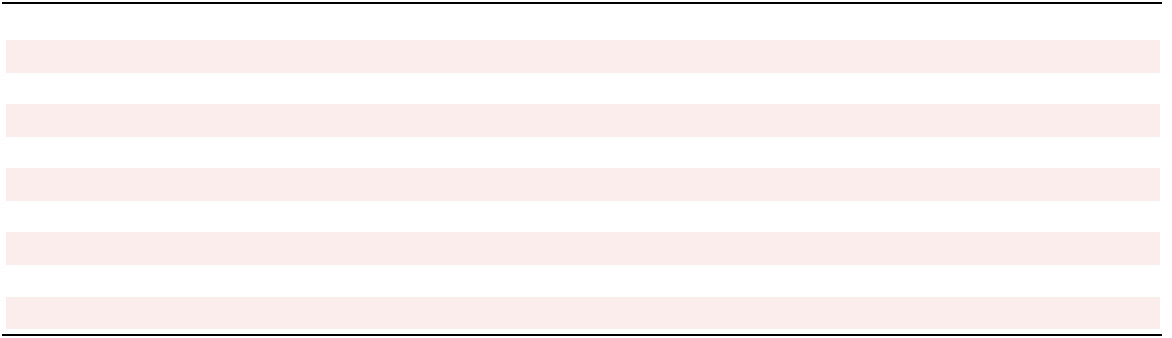
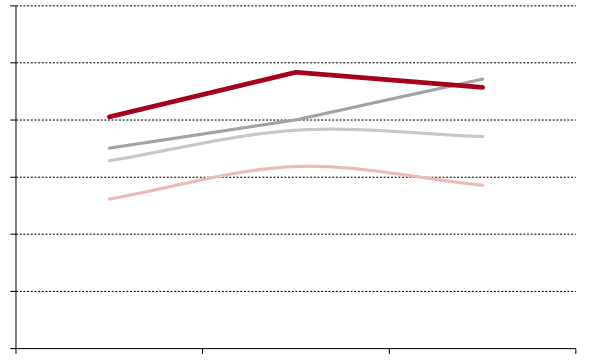
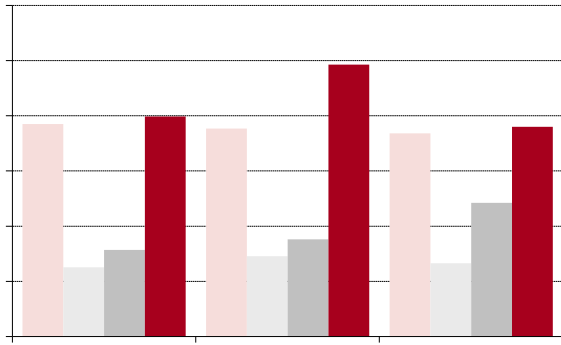
螯合树脂：应用领域例如湿法冶金等 酶载体树脂：主要应用于医药领域



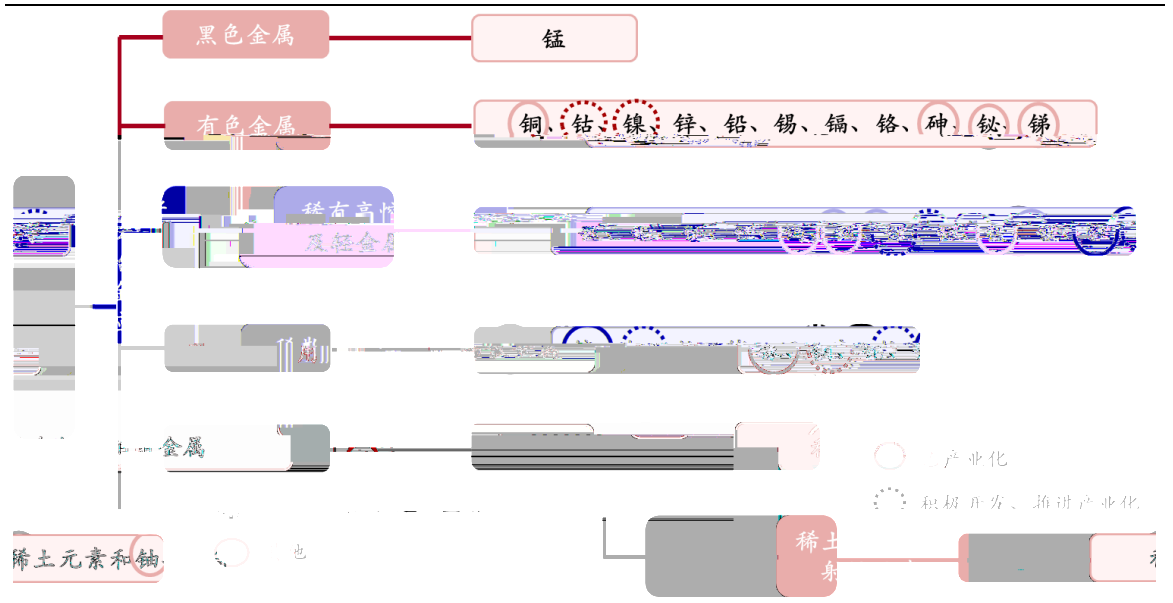
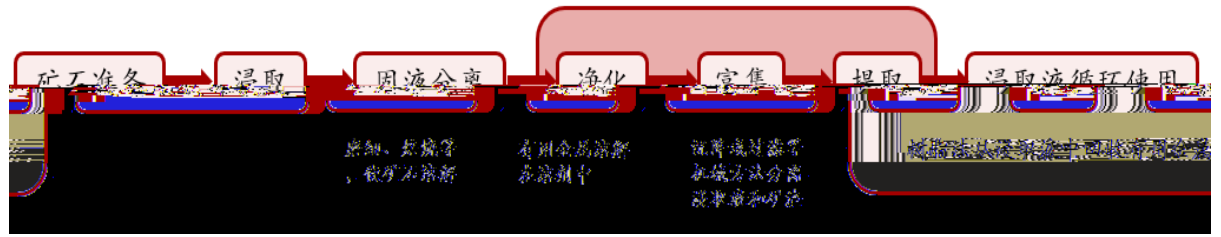


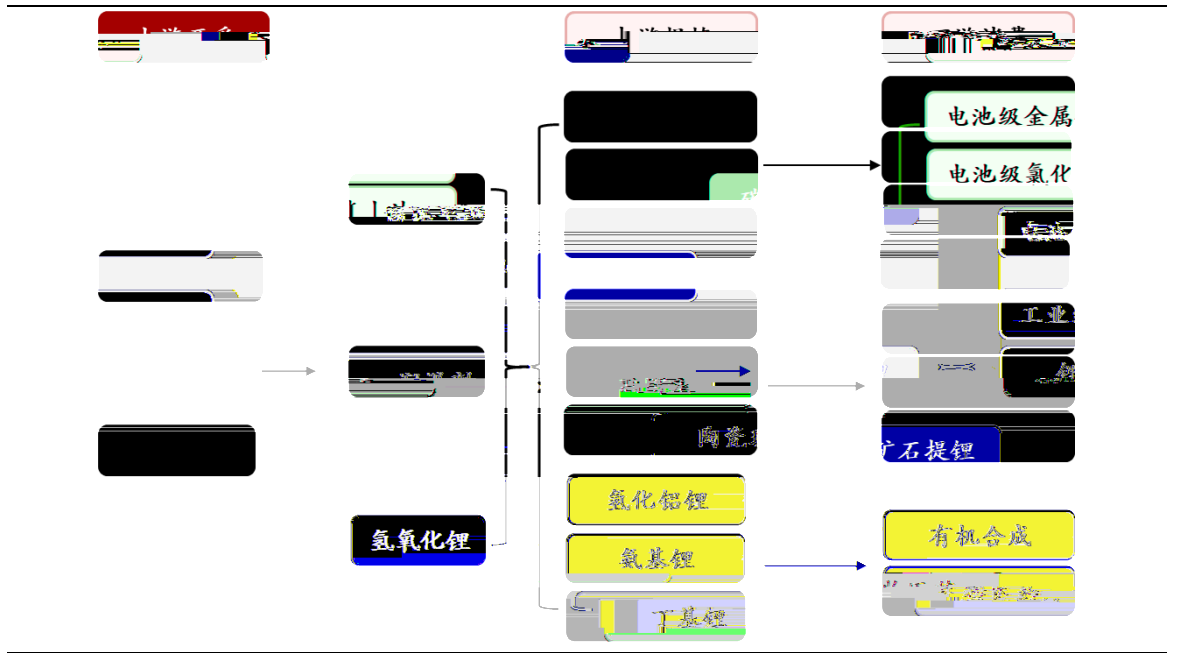
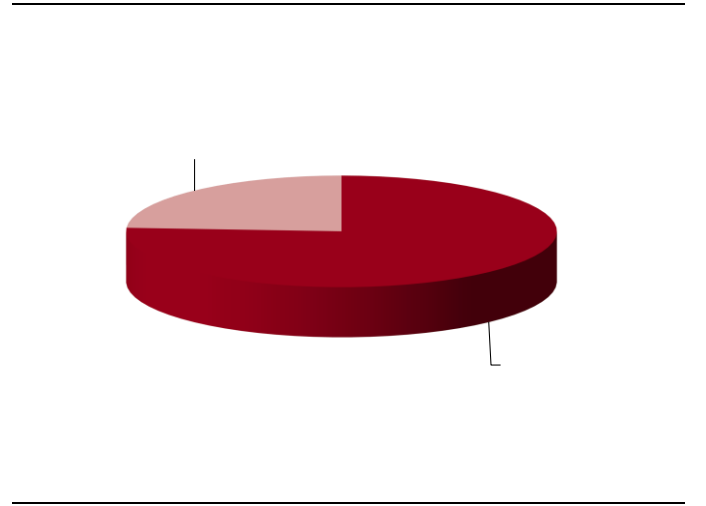
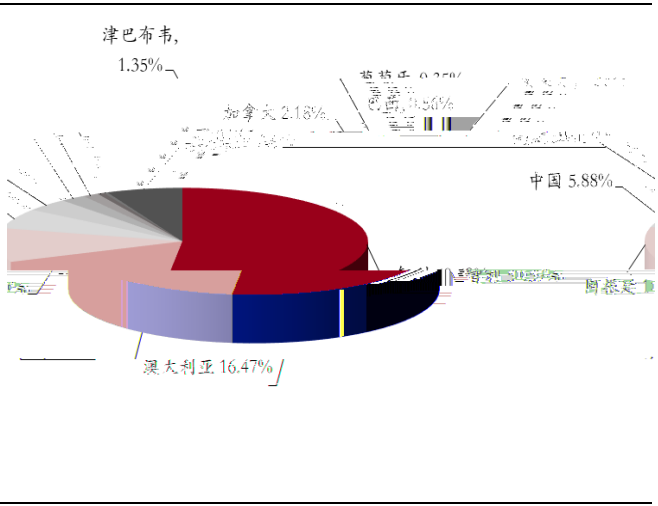


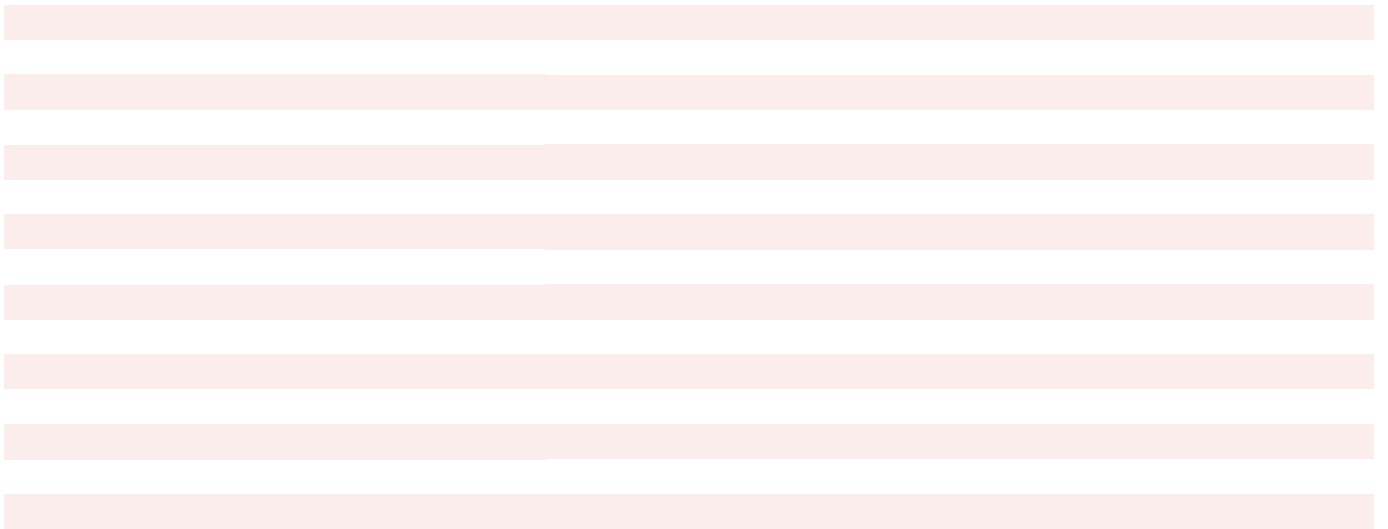
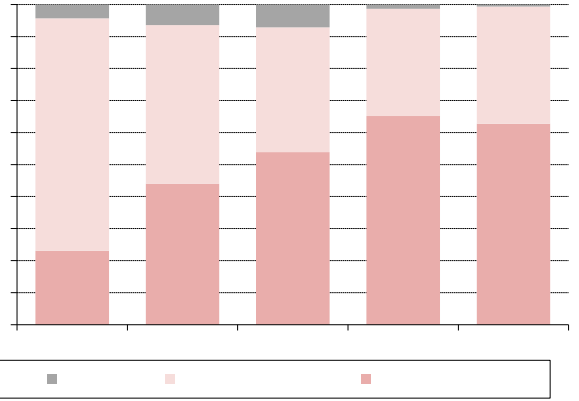
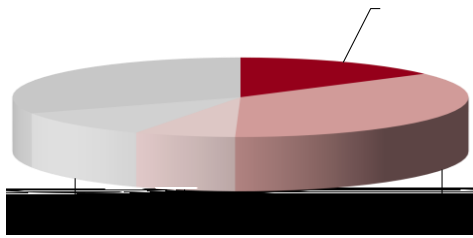




2 3 4 A / 0

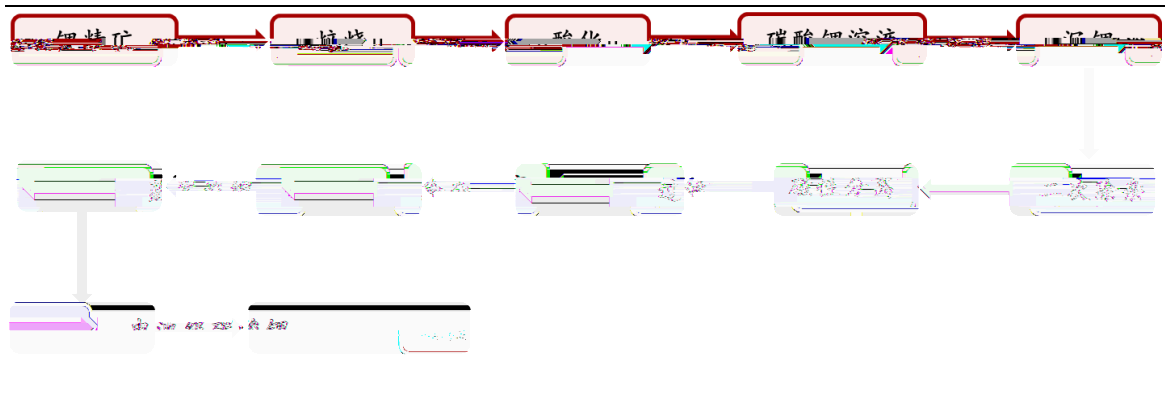
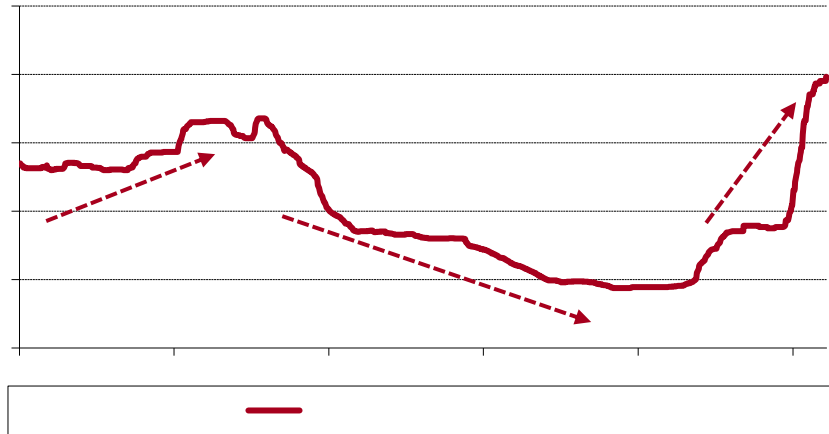


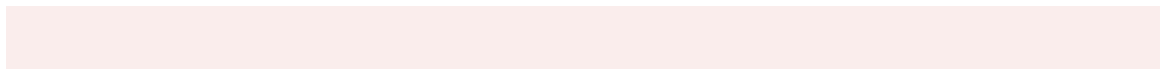
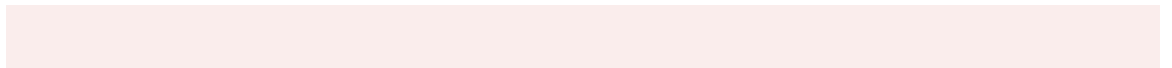
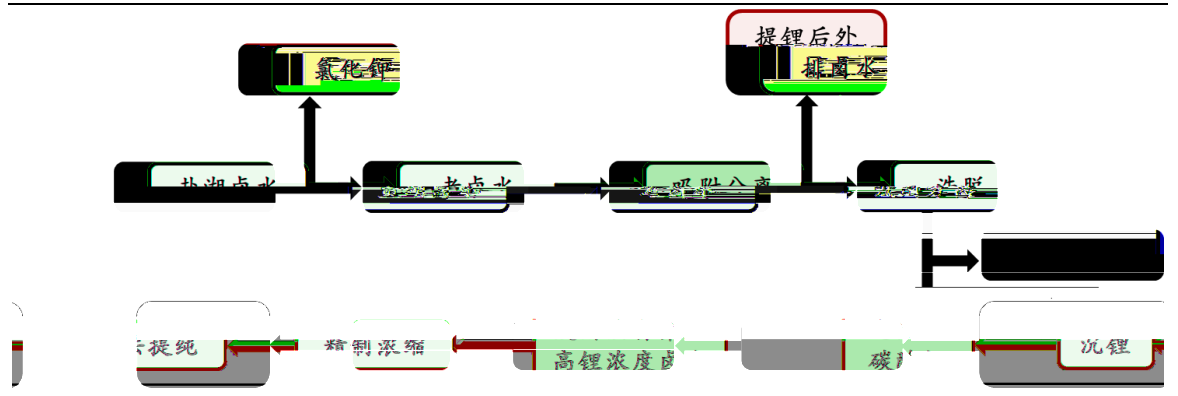




B B , 22/  
0 , 446  
5--









---

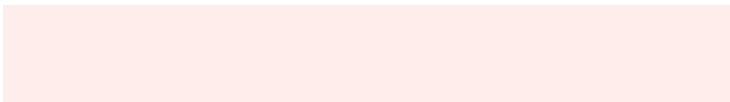
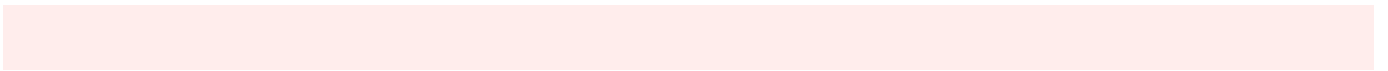
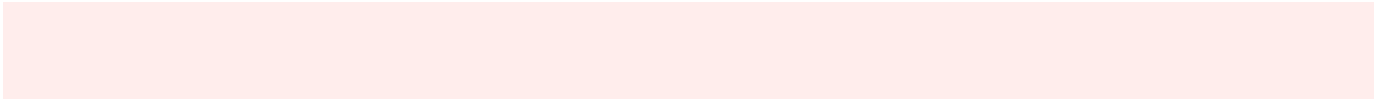
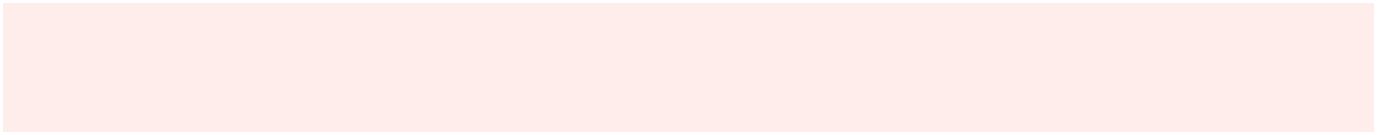
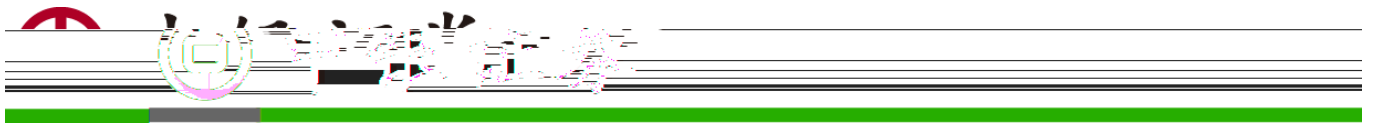
--	--

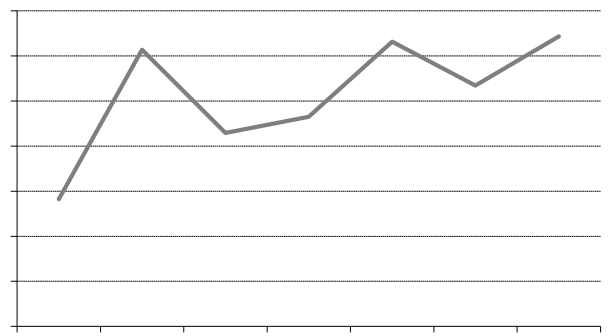
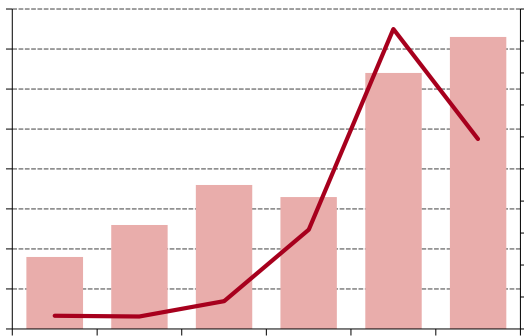
--	--

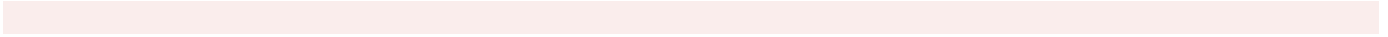
--	--

---

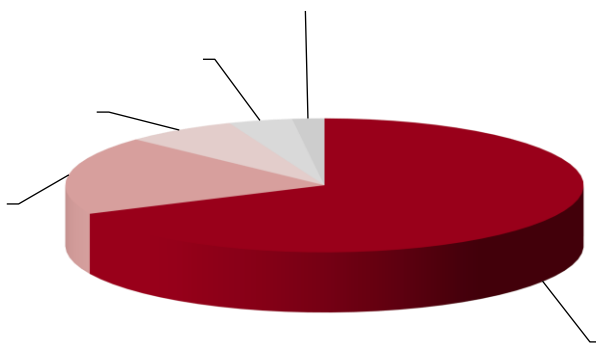


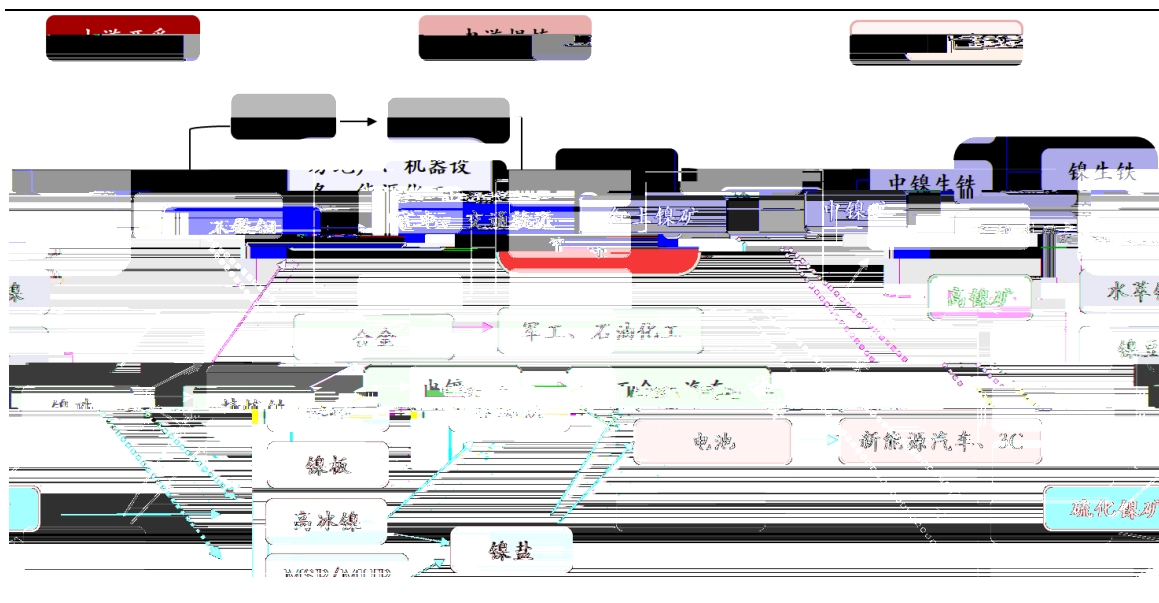
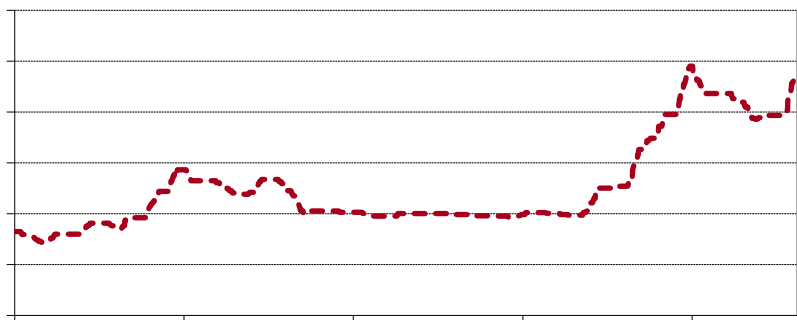




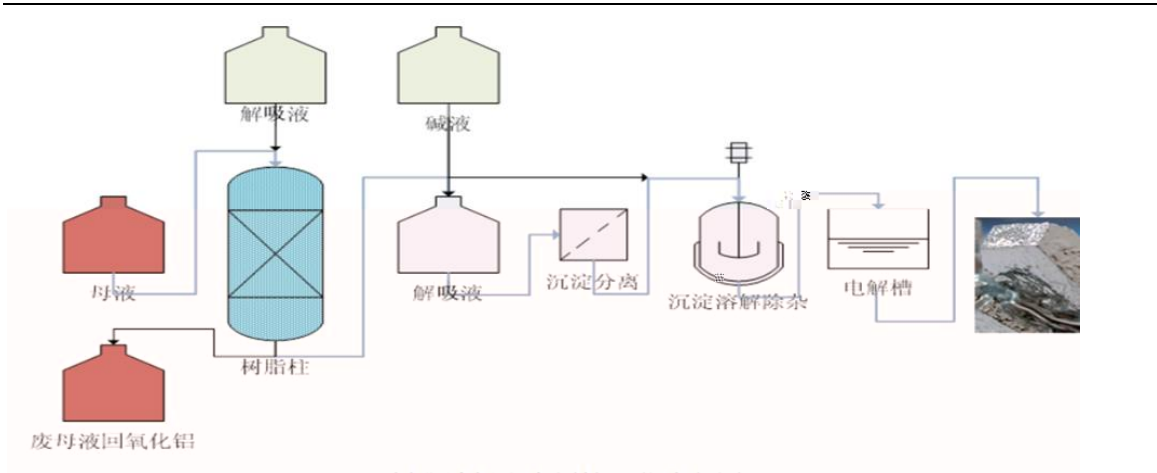
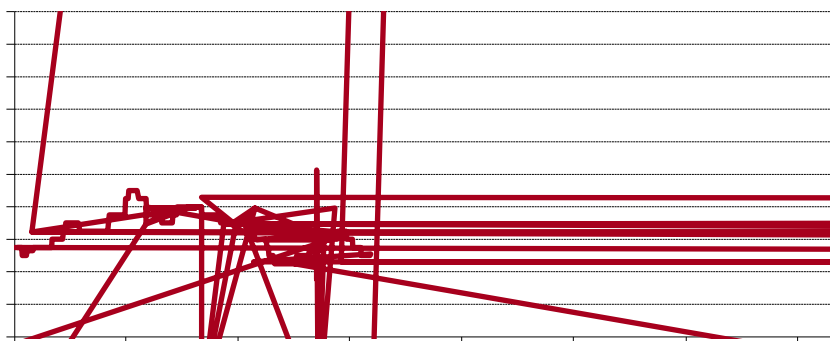




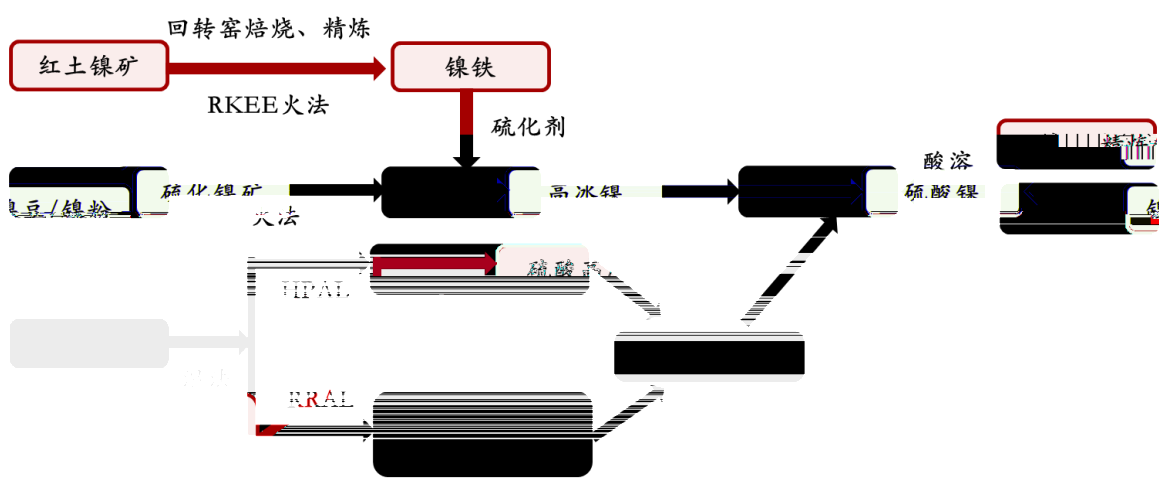
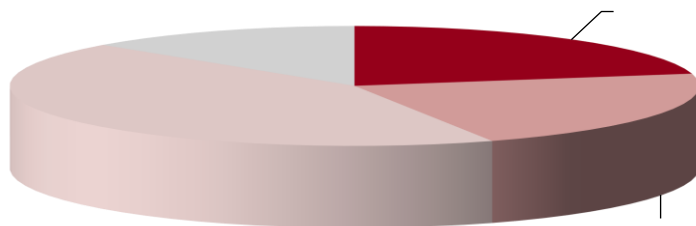
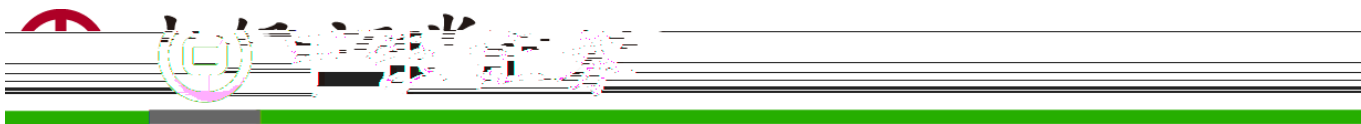


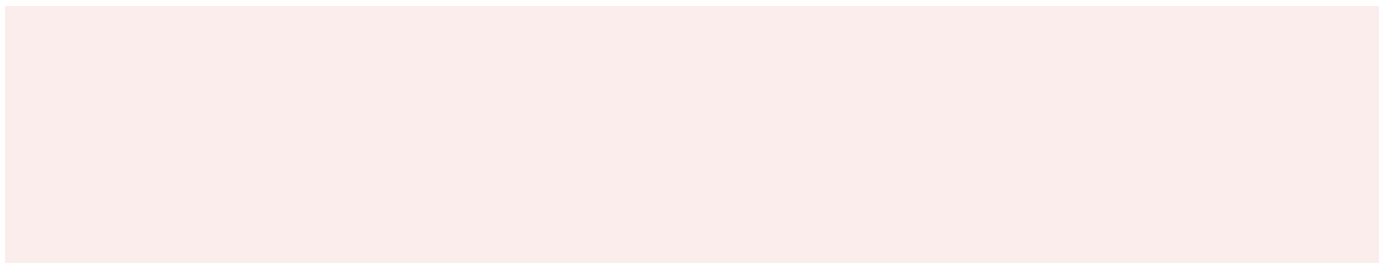
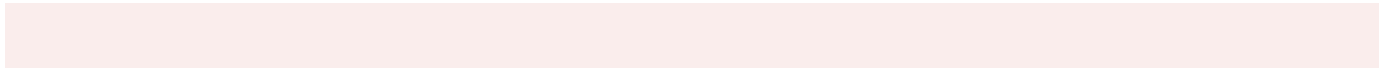
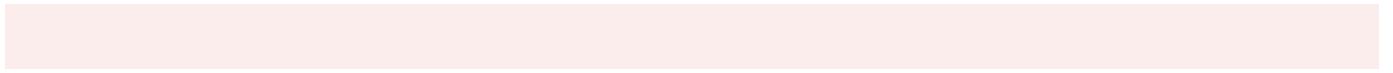
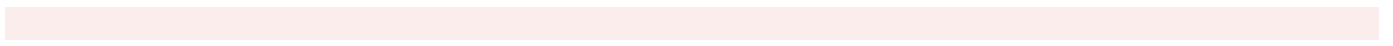
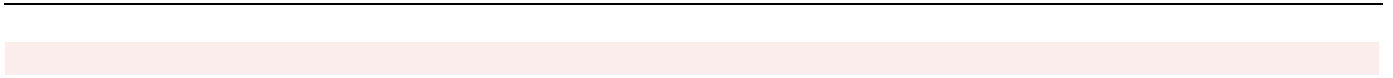
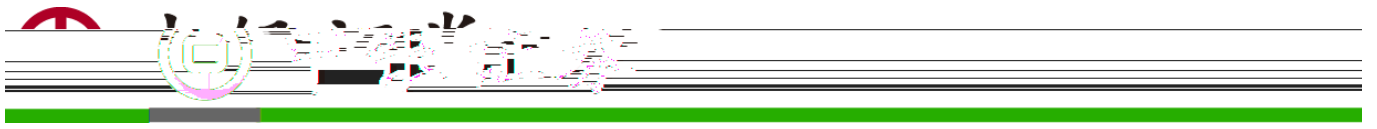


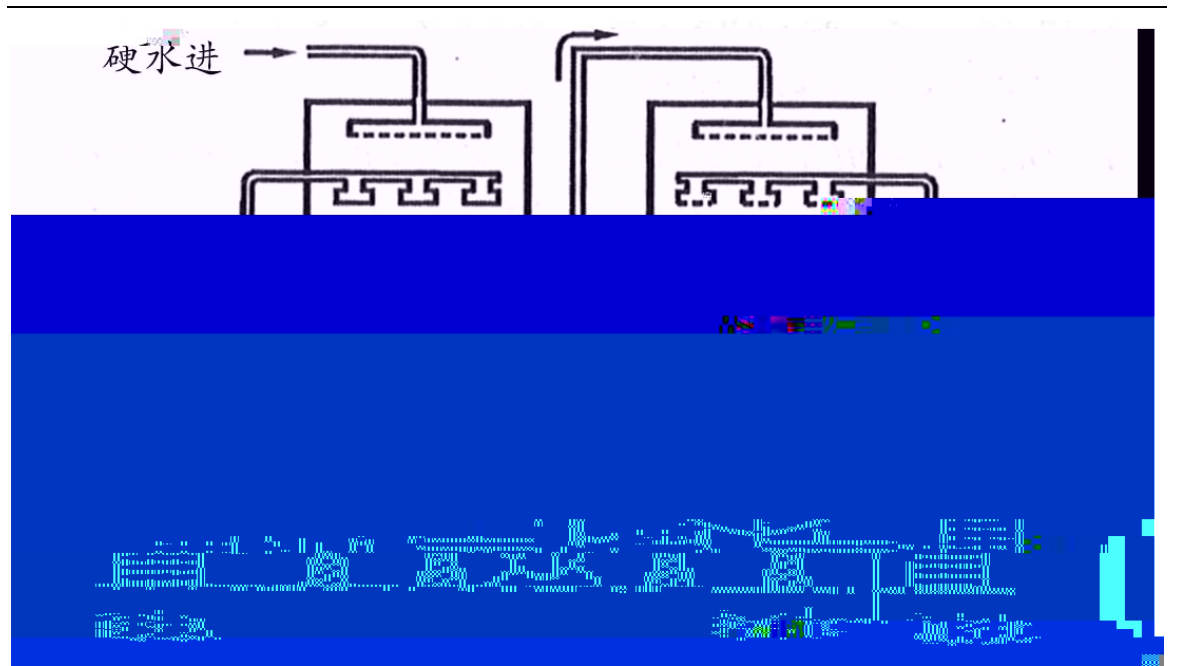


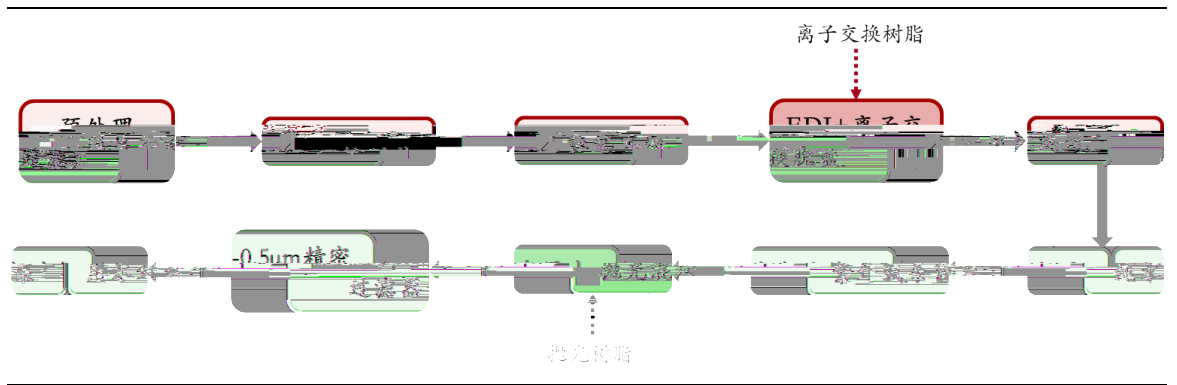
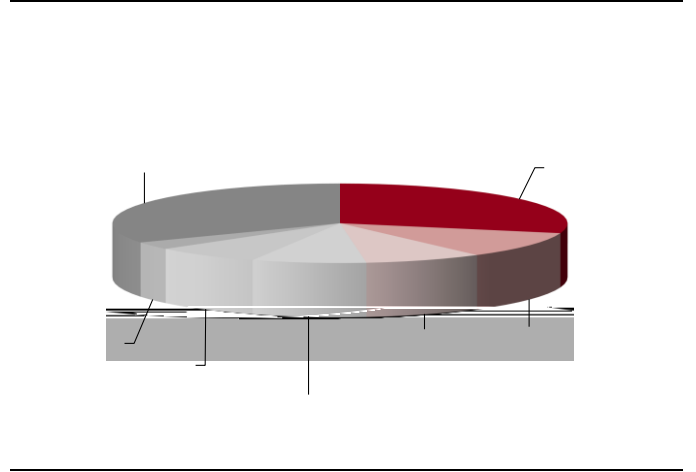
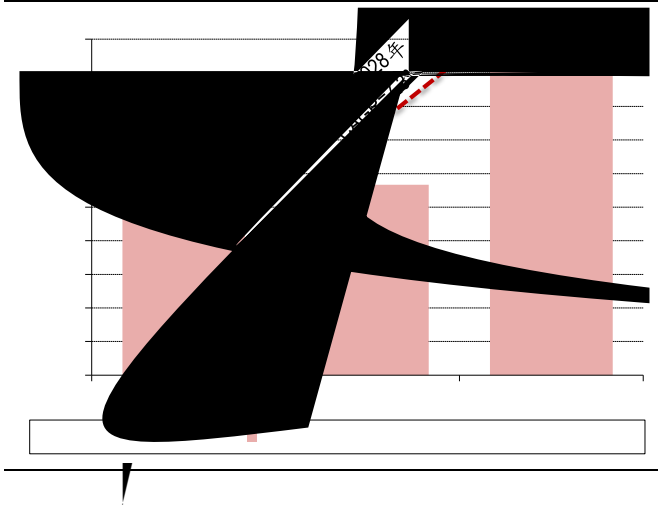


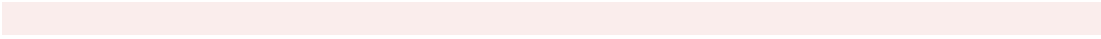
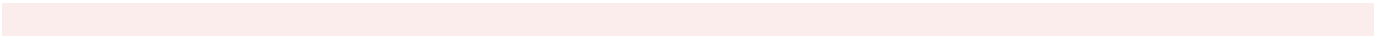
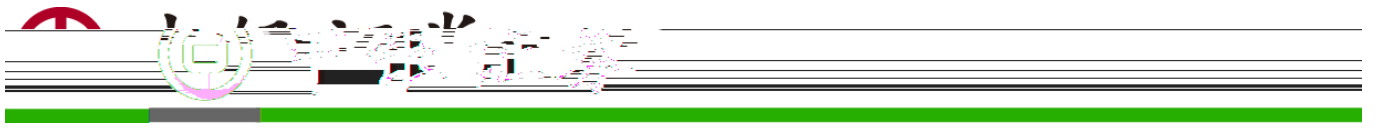


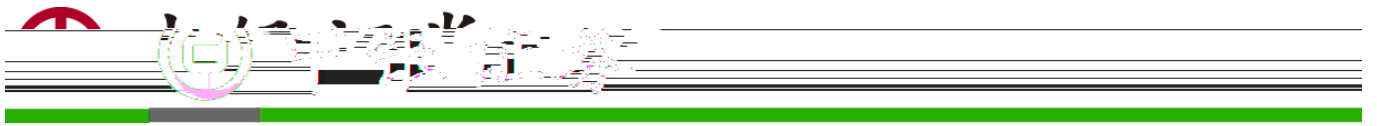


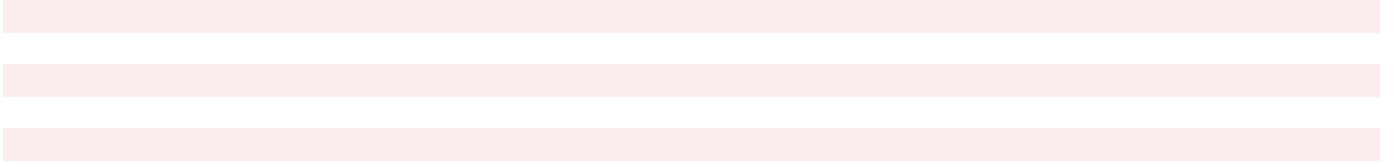
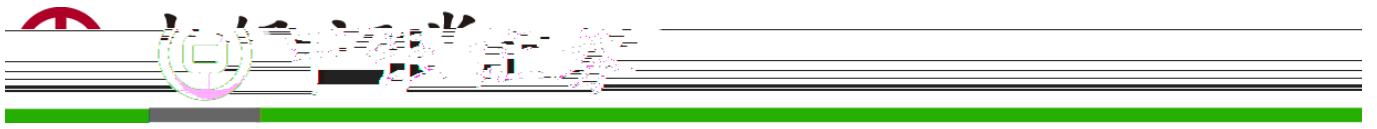


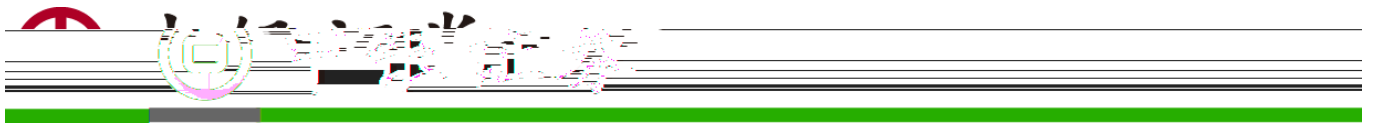












---

Four horizontal pink bars for writing, positioned between two thin black lines.

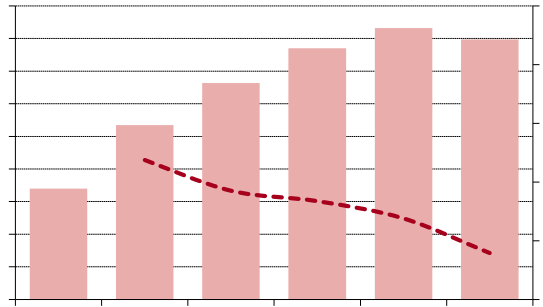
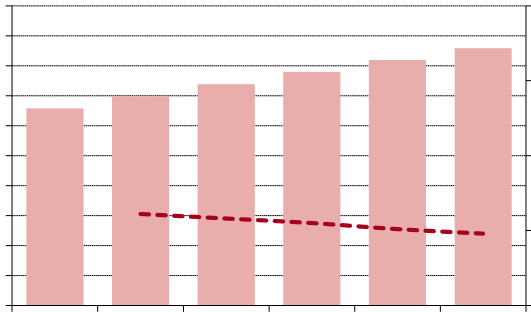
---

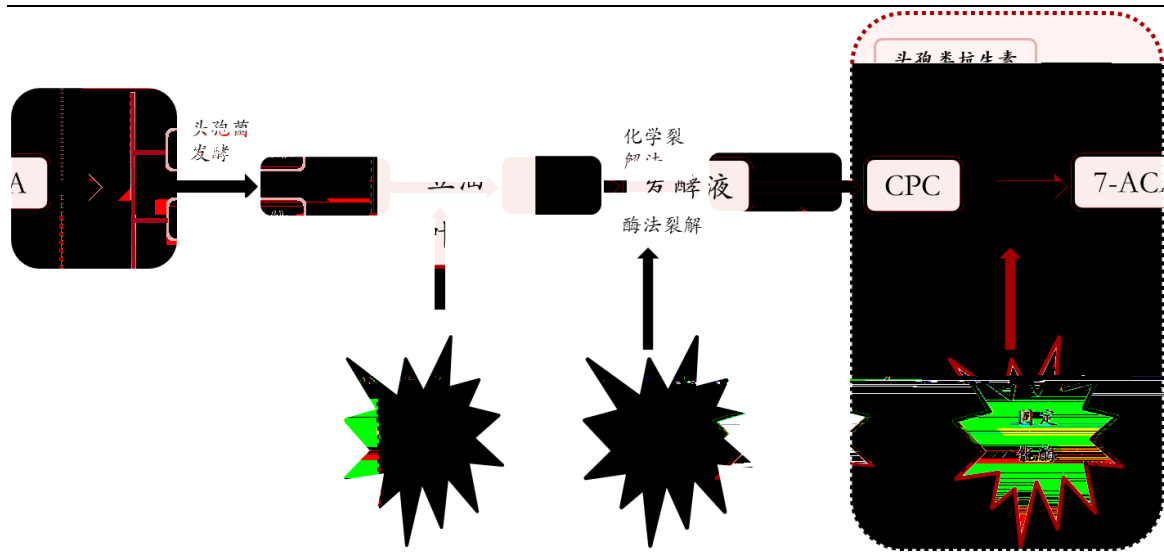
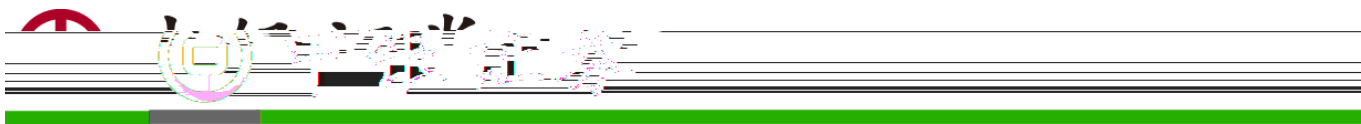


[Redacted text block]

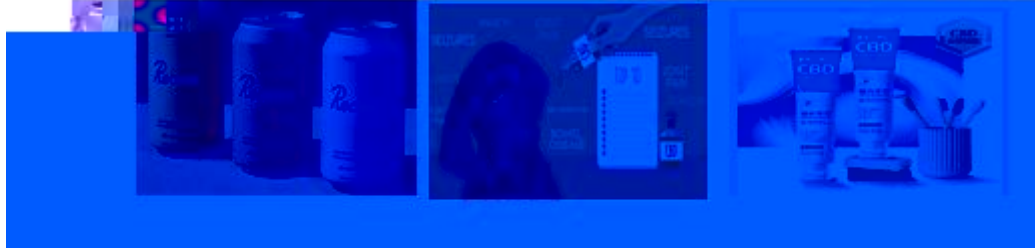
[Redacted text block]

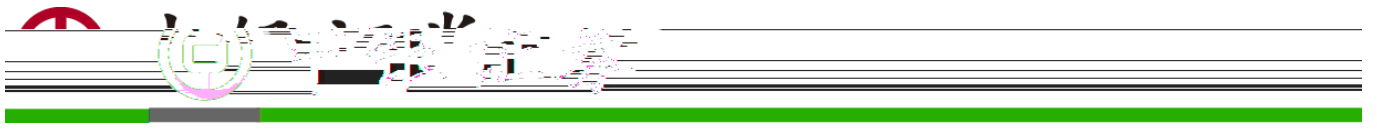
[Redacted text block]





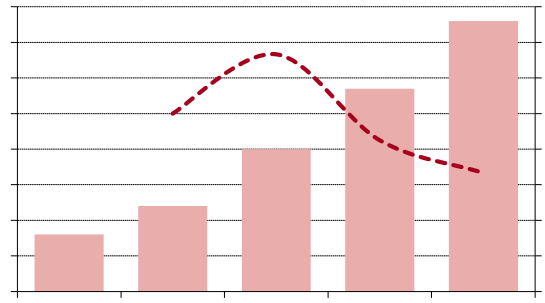
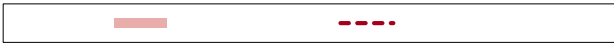
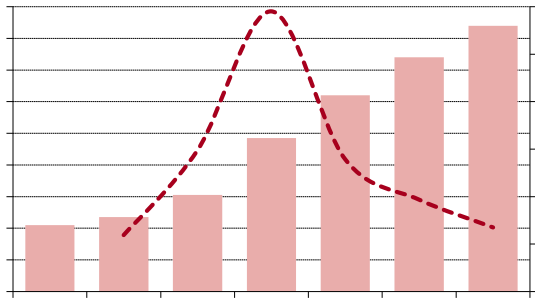
CBD



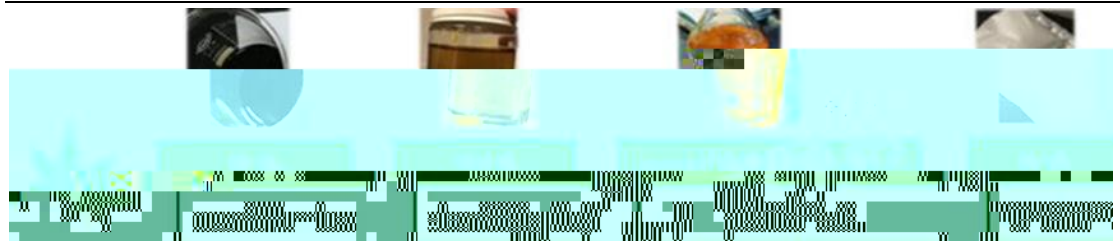


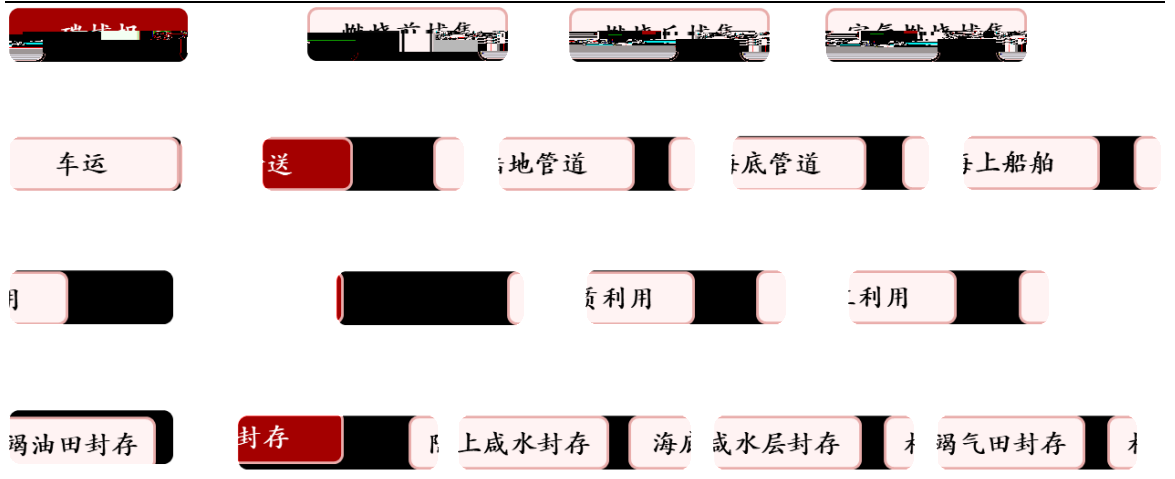
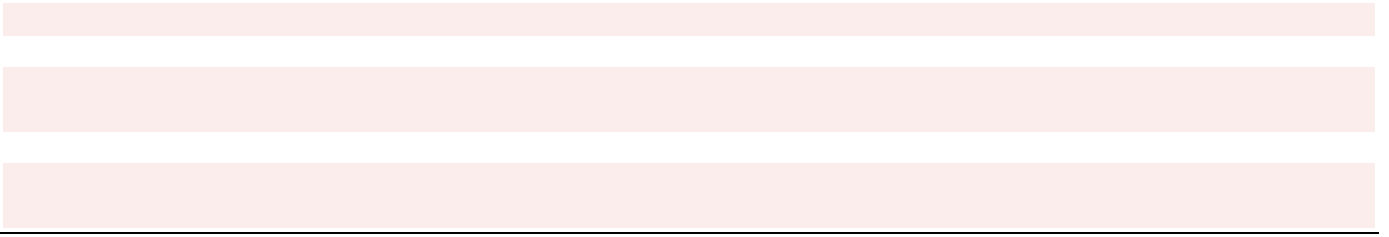
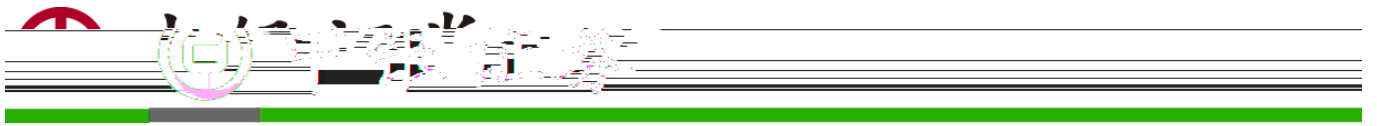
---

Three horizontal light pink bars, likely serving as a placeholder for text or a signature line.



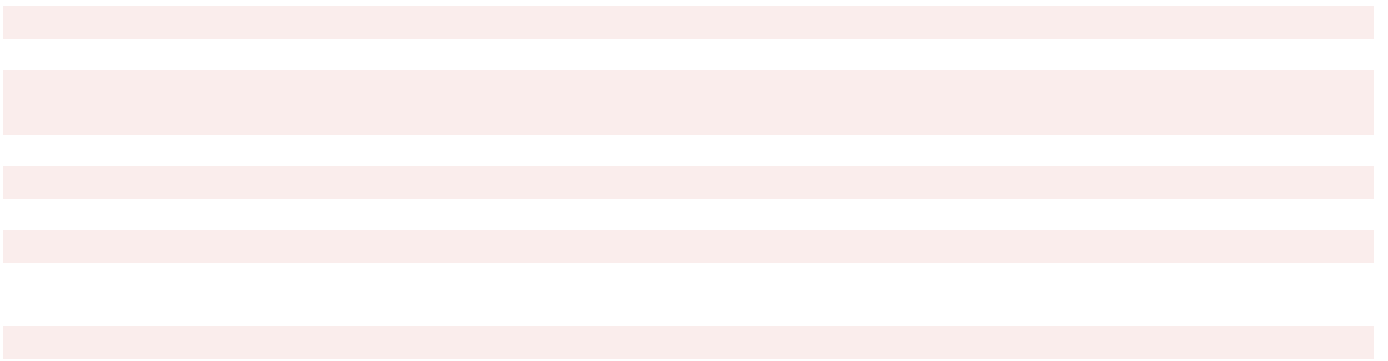
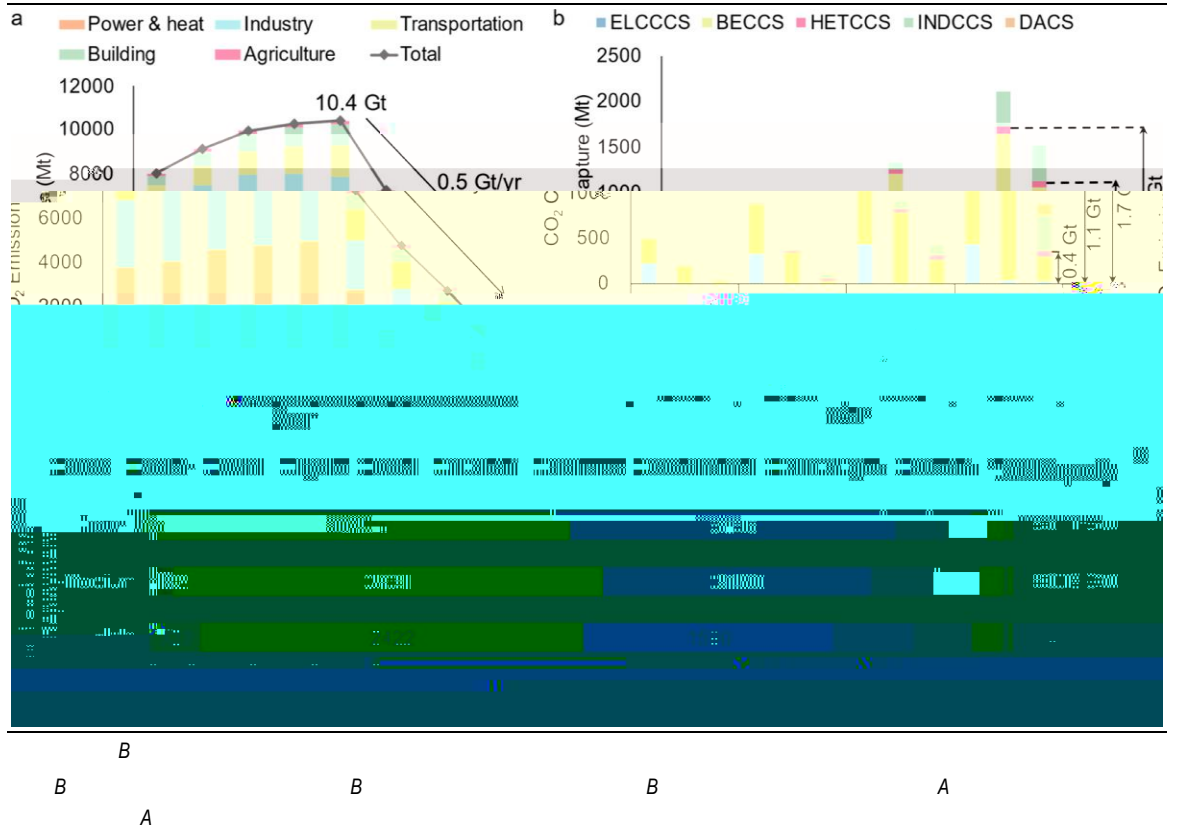
/-.6

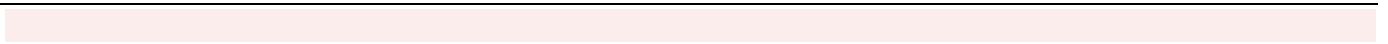




/-.6

### CCUS









---

A series of 14 horizontal lines for writing, each line is a light pink color. The lines are evenly spaced and extend across most of the page width.

---



---

Four horizontal light pink bars, likely serving as a template for text or a decorative element.







( )

( )



---

---

---

